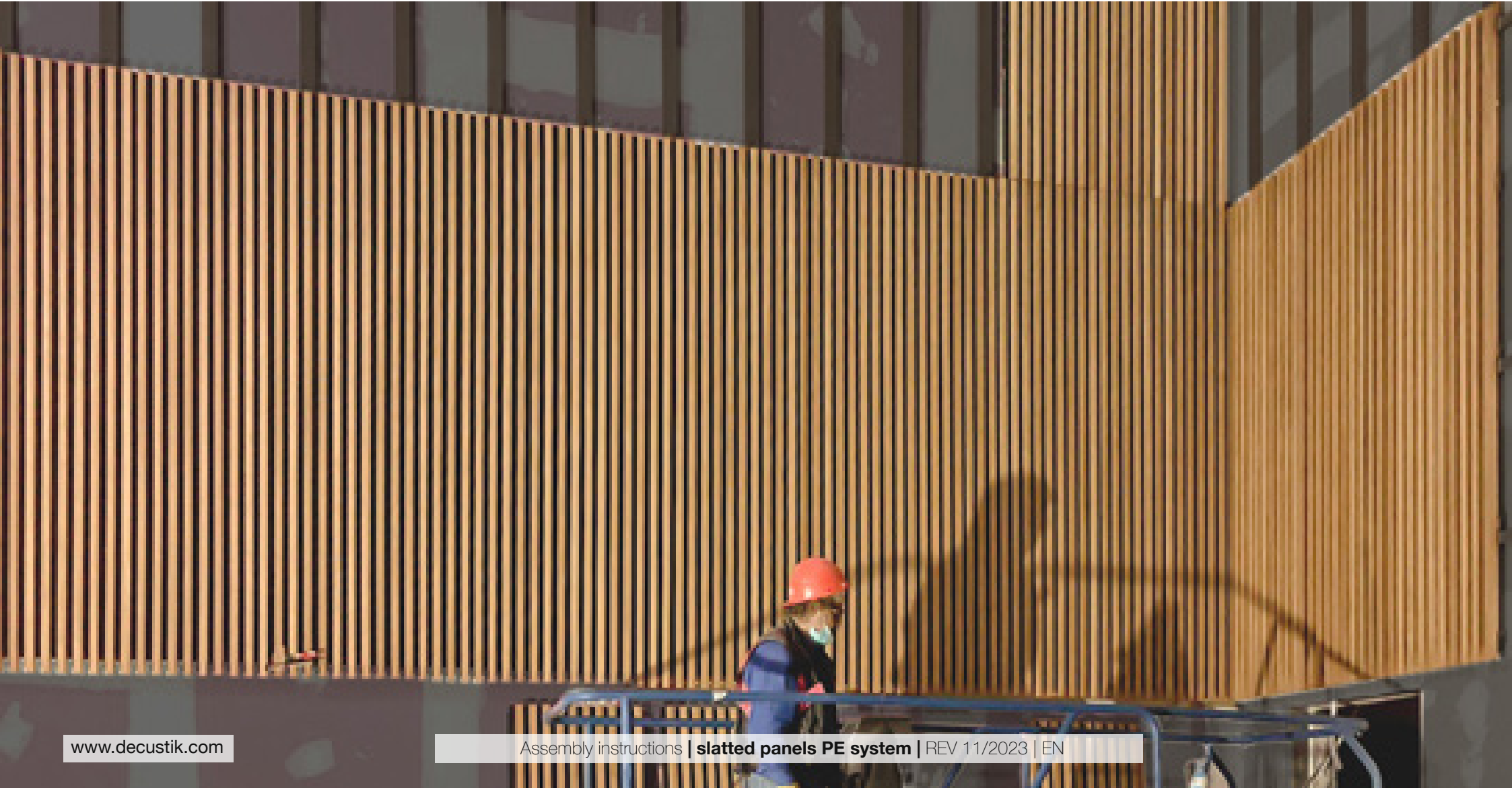


# Assembly instructions for slatted panels PE system

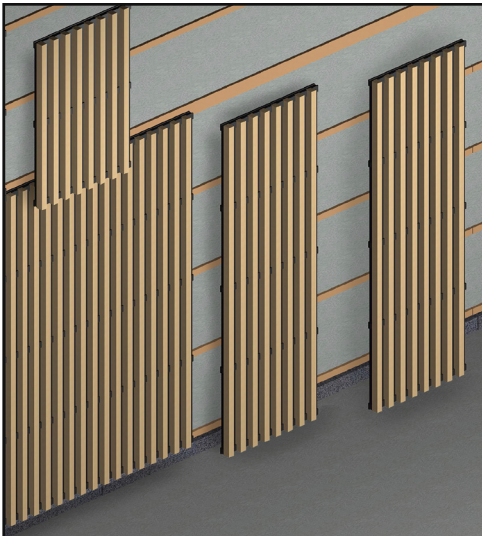


# Assembly instructions for slatted panels PE system

## Prerequisites for the installation

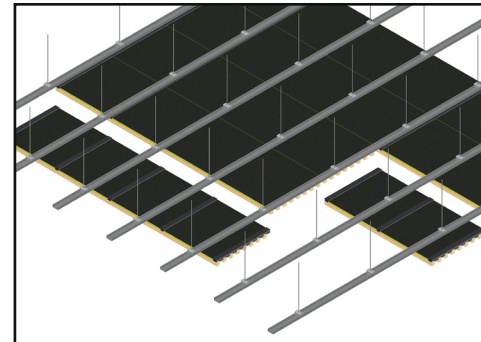
Before assembly starts, check that the prerequisites required on the site for installation are met (consult the document “TRANSPORT, STORAGE, INSTALLATION and MAINTENANCE conditions” published on our website).

To achieve the acoustic absorption coefficients equivalent to those obtained in our laboratory tests, you must leave a space above the ceiling tiles according to the technical data sheet for every model, usually 200mm on false ceiling and 40mm or 19mm on walls. Our slatted panels already integrate a 15mm mineral fiber but to increase the acoustic absorption coefficients, and following the indications of our technical sheets, you can place an additional layer of fiber ISOVER ARENA APTA BASIC with a density of 21 kg/m<sup>3</sup> and a thickness of 48 mm or equivalent. You must take care that mineral wool is in contact with the back face of the panel.



### Wall assembly using screws and slats

For the covering of vertical walls, the panels are generally fixed on a base of well-leveled posts fixed to the wall. Mounting on the wall using screws and slats



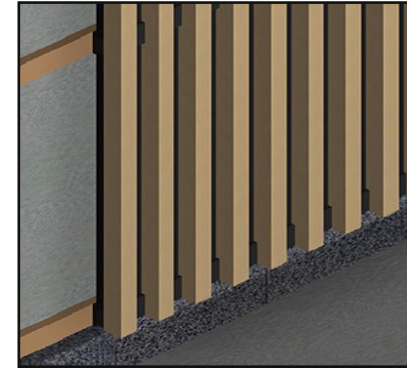
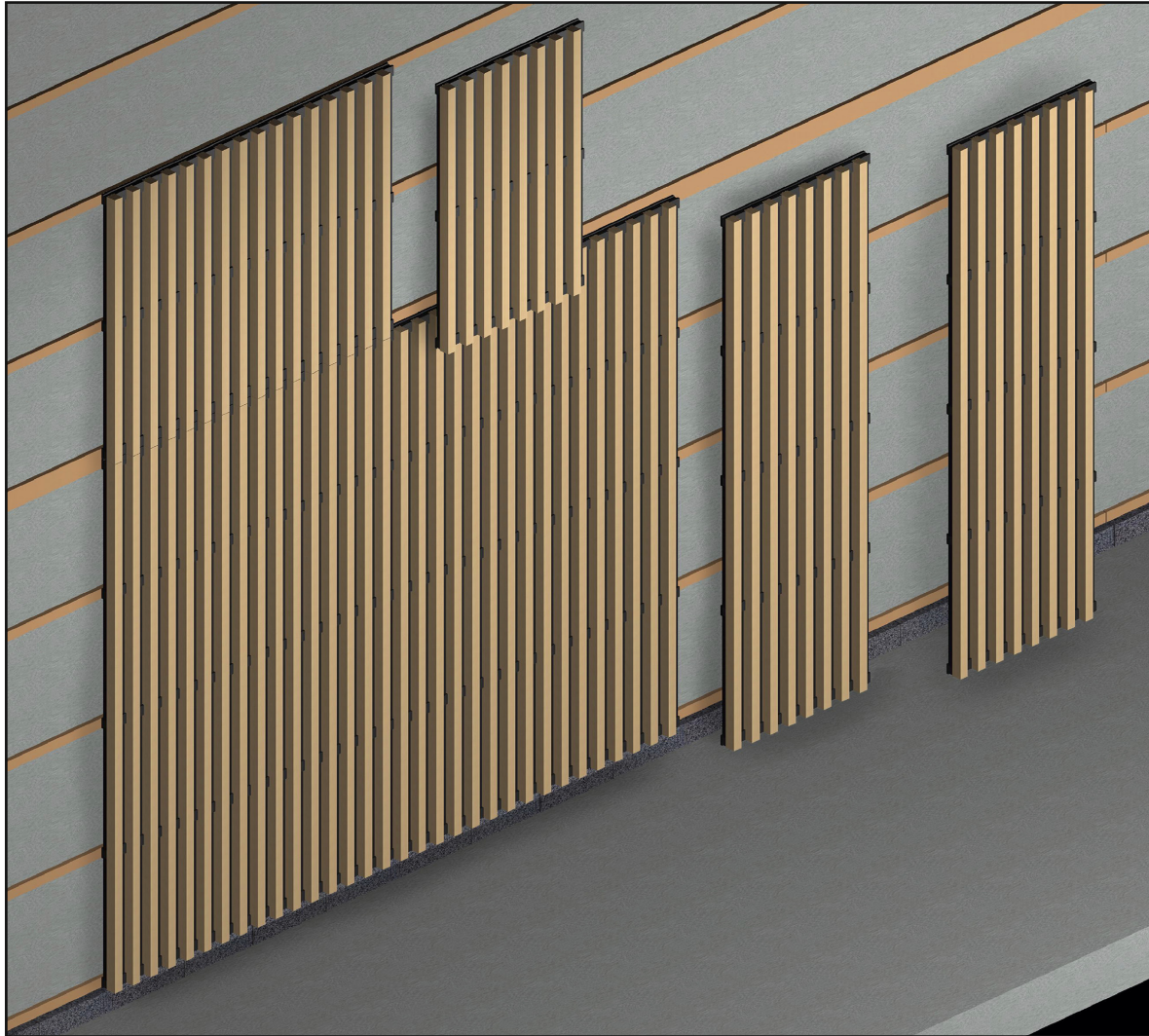
### False ceiling assembly with T60 structure and screws

All models can be installed with screws beneath a frame of battened profiles affixed to the ceiling, e.g. T60 drywall-type profiles

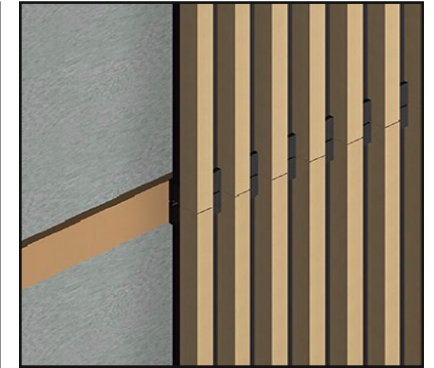
## Wall assembly using screws and slats

The slatted panels can be screwed onto a wooden frame, which serves to both level the wall and improve sound absorption.

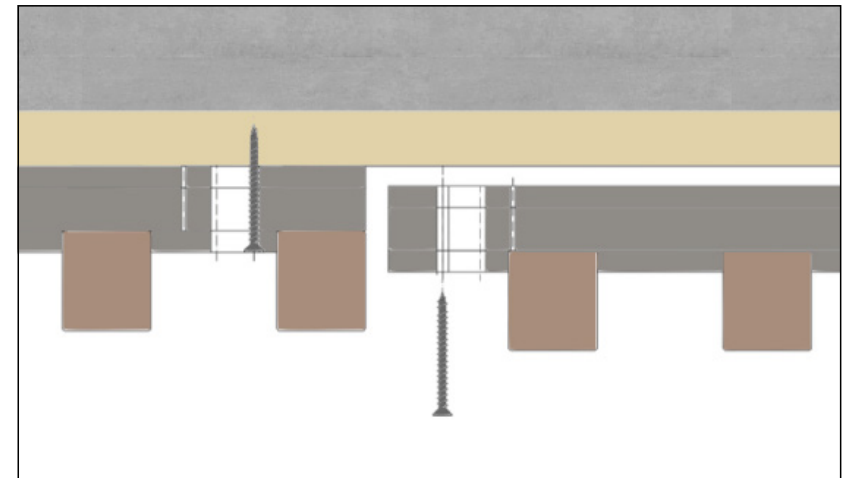
If you need to carry out a repair or install cabling, pipes, etc., the panels can easily be unscrewed and removed.



Prevent direct contact of wooden panels with the floor to avoid moisture problems. Protect the bases using skirting boards or other elements.



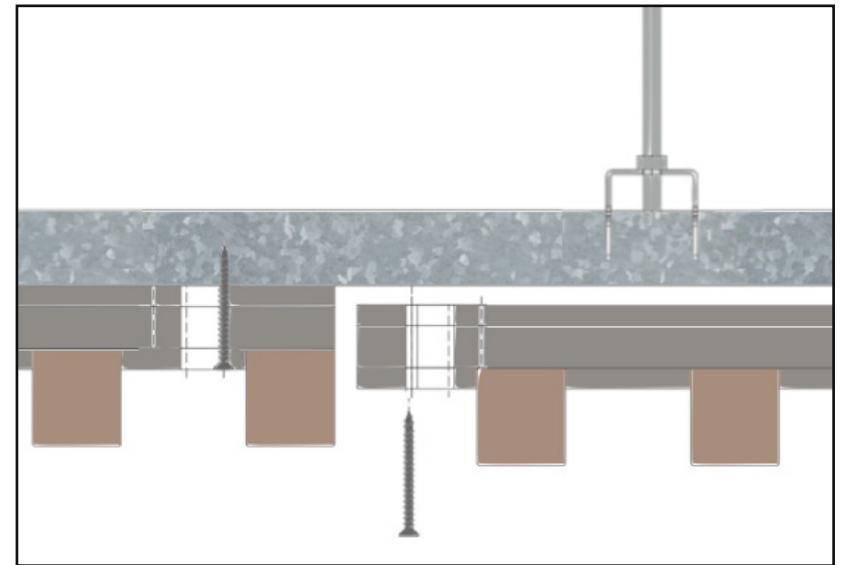
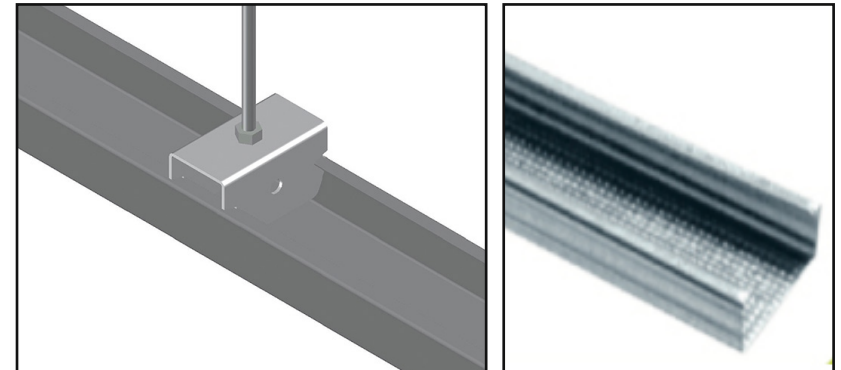
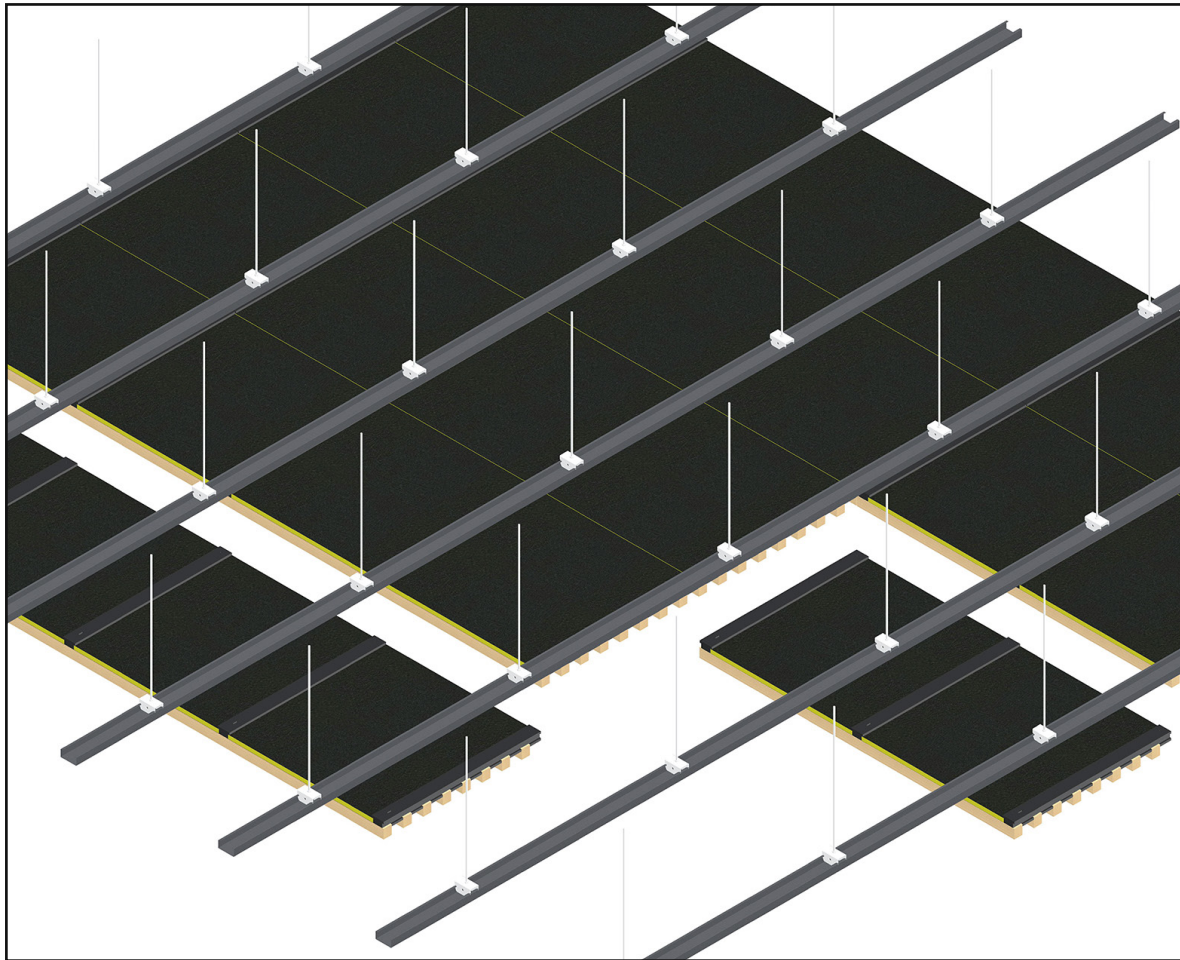
The battens must be perfectly leveled and firmly attached to the wall. Walls must be absolutely dry.





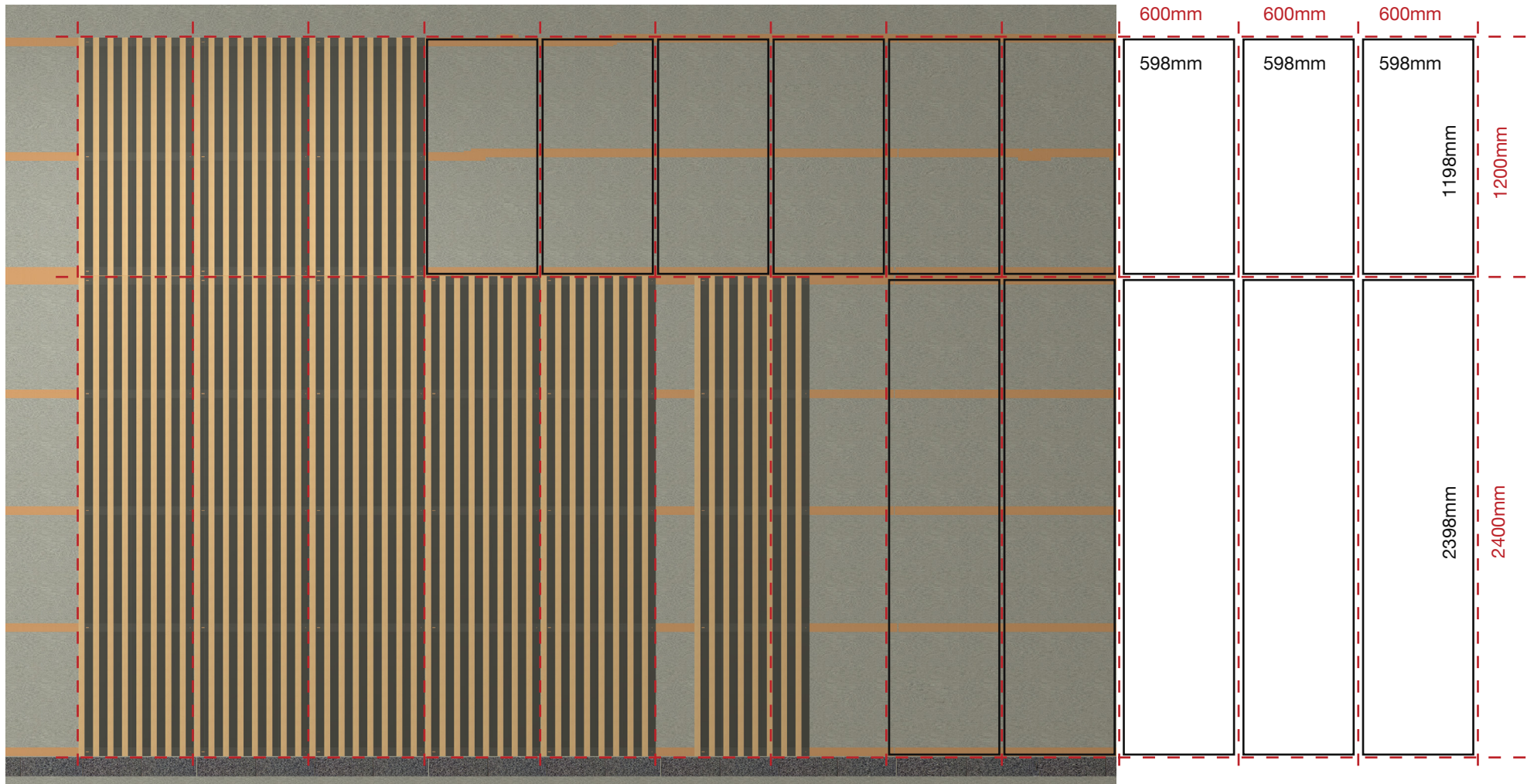
## False ceiling assembly with T60 structure and screws

All models can be installed with screws beneath a frame of battened profiles affixed to the ceiling, e.g. T60 drywall-type profiles.



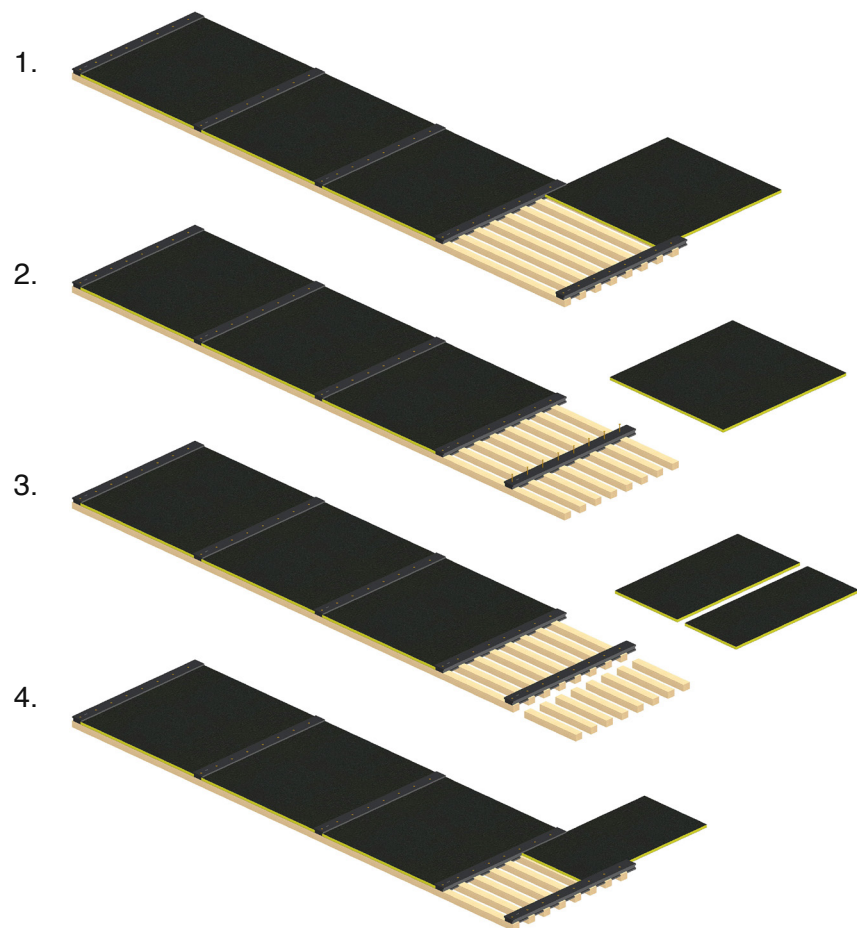
## System modulation and expansion joints

Our PE slatted panels have standard dimensions of 1200x600mm and 2400x600mm, but in reality they are 2mm smaller (1198x598mm and 2398x598mm). To install them, we must follow the 2400mm, 1200mm and 600mm modulation, leaving 2mm space between panels. This will allow each panel to have its own expansion joint to absorb temperature and humidity changes (see INSTALLATION CONDITIONS document published on our website). Additionally, we must include additional expansion joints that match the building's expansion joints.

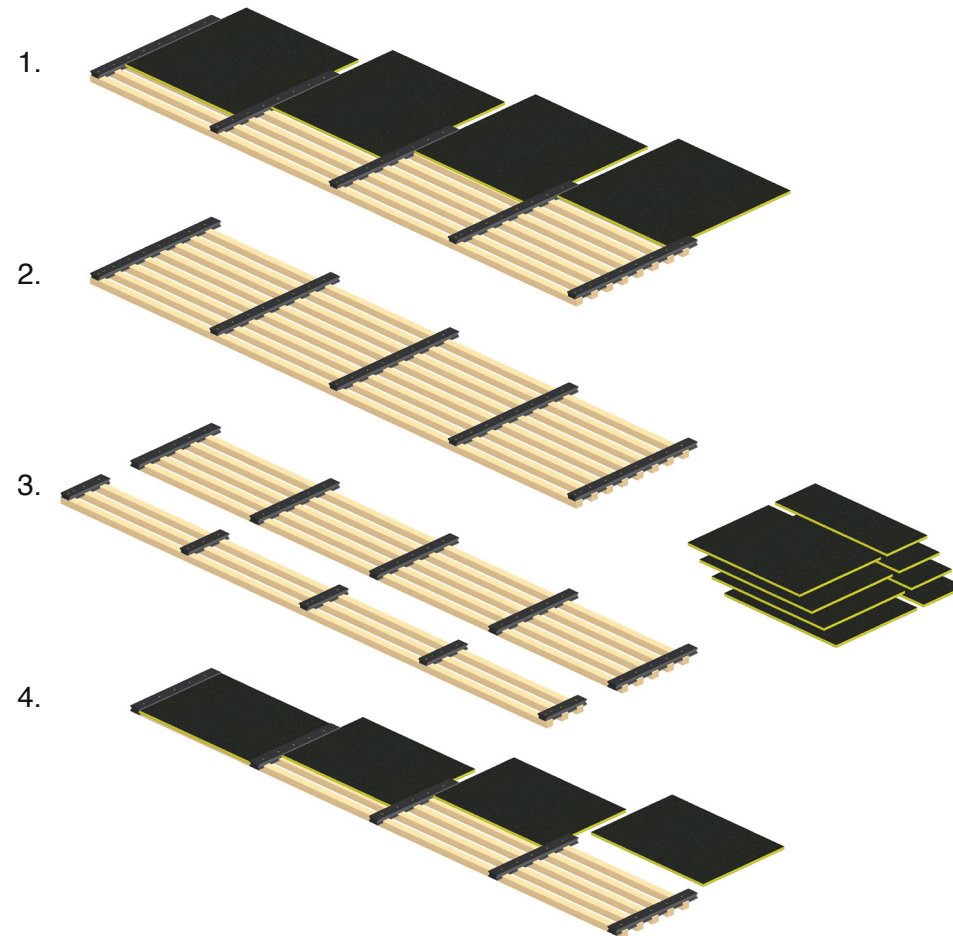




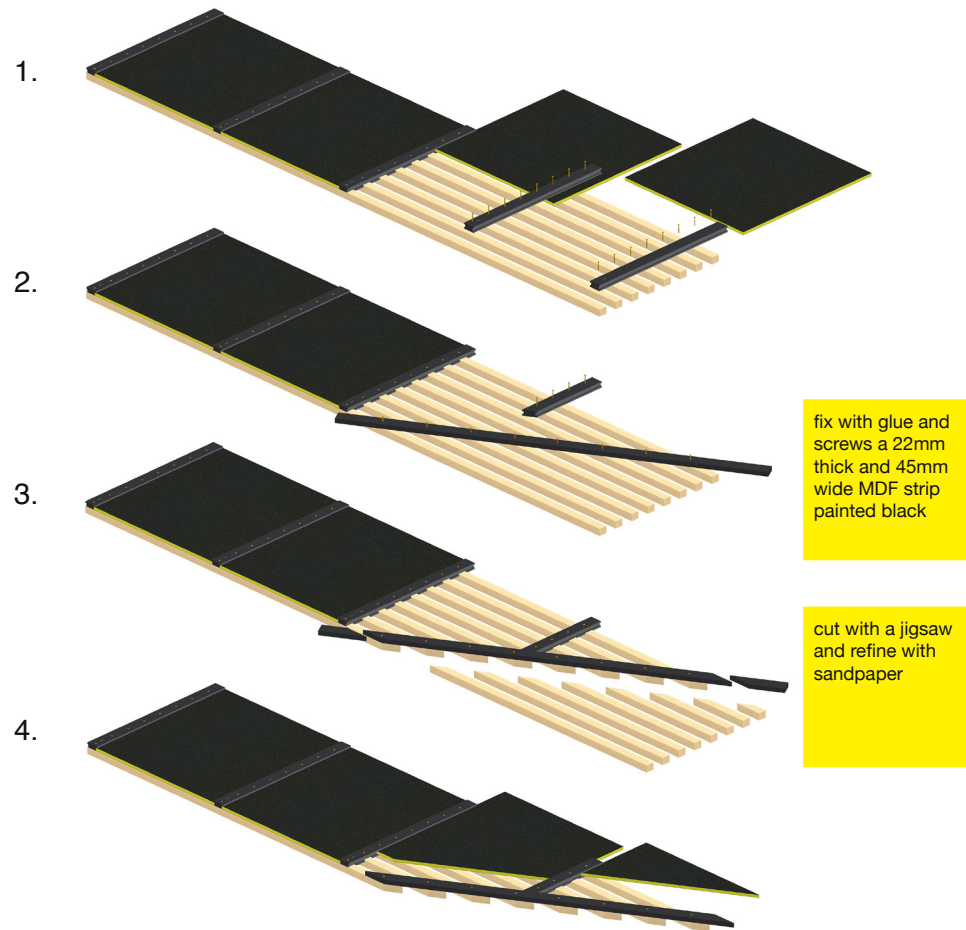
## Cut through



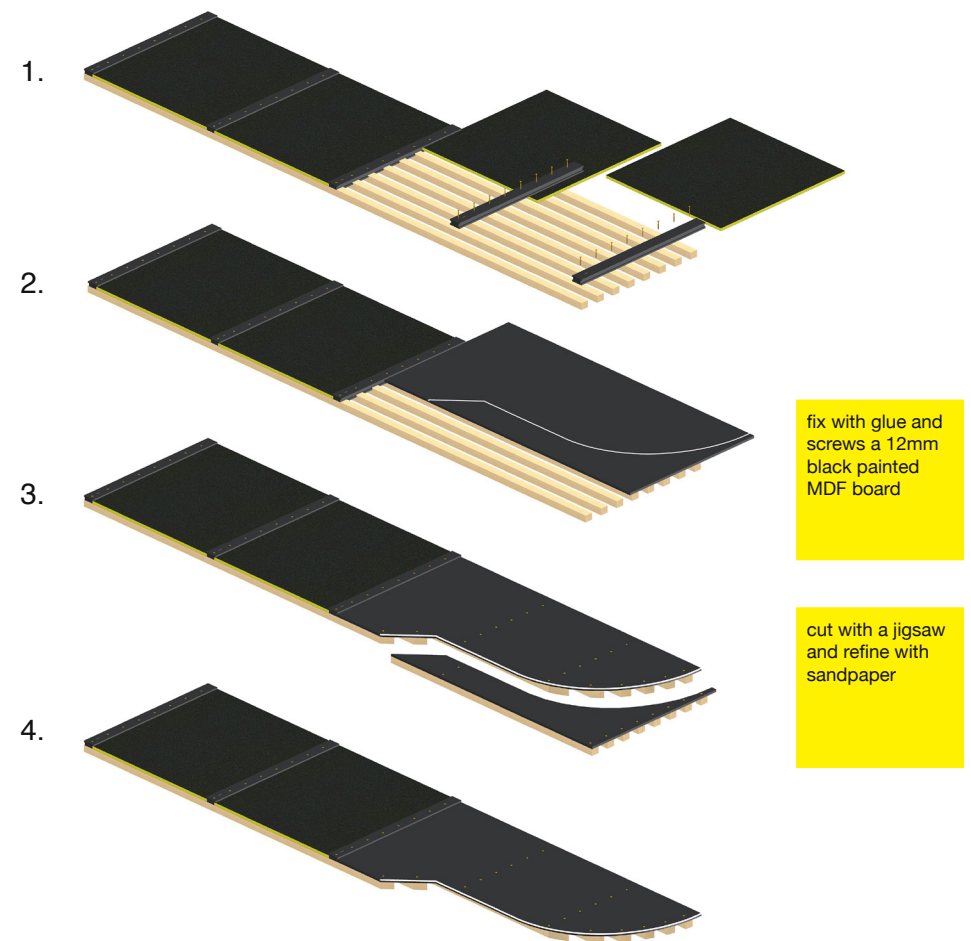
## Longitudinal cut



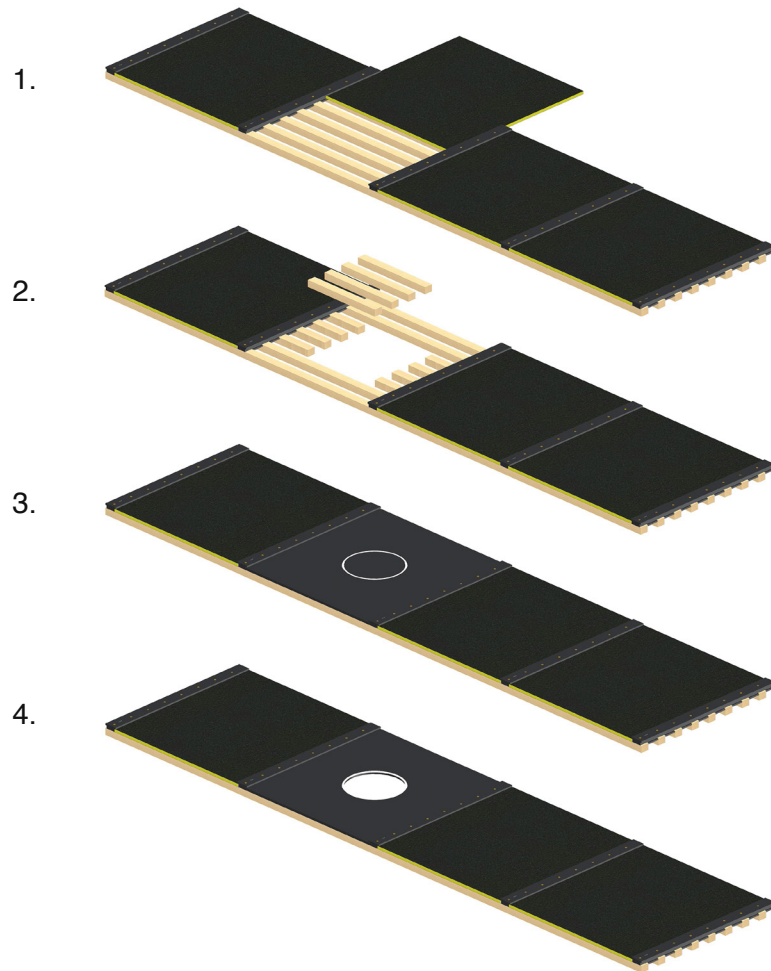
## Angle cut



## Shape cut



## Lighting and ductwork



fix with glue and  
screws a 12mm  
black painted  
MDF board

cut with a jigsaw  
and refine with  
sandpaper



# Important

**For the correct installation of our products you must follow these assembly instructions, in addition to accomplishing with the transport, storage, installation and maintenance conditions published on our website.**

The images in this manual are only illustrative of the different installation concepts and recommendations; therefore the dimensions, scales and proportions shown may vary for a better understanding of the installation systems proposed. Illustrations have been completed with accessories not included.

Due to the high customization of our products, the information described in this documentation may vary.

The company is not responsible for eventual errors in writing, printing, technical data and translations.

Possible updates of this document available at [www.decustik.com](http://www.decustik.com).

This installation recommendations must be corroborated and adapted in each case by the technical management of each project.

Copyright © 2022 Decustik

This document is the sole property of DECUSTIK - Mecanitzats de la fusta Kim, s.l. and may not be copied, reproduced or published, even partially, without prior written authorization. Decustik is a registered trademark of Mecanitzats de la fusta Kim, s.l.

## **ASSEMBLY INSTRUCTIONS SLATTED PANELS PE SYSTEM REV 11 2023 / EN**



**Pol. Ind. Mas les Vinyes**  
C/ Llevant, 2  
08570 Torelló (Barcelona)  
T (+34) 93 859 08 38  
**[comercial@decustik.com](mailto:comercial@decustik.com)**  
**[www.decustik.com](http://www.decustik.com)**